



16·17·18

April

2024

6th Edition

National Waste Management Plan for a Circular Economy

Ireland

KEVIN SWIFT

REGIONAL WASTE COORDINATOR

CONNACHT ULSTER WASTE REGION

Content

- Ireland
- Irish Market Structure
- Irish Waste Statistics
- Challenges and Responses
- National Waste Management Plan for a Circular Economy (Ambition, Targets, Focus Areas)

Population
5,149,139

Up 8%



Average Age
38.8

Housing

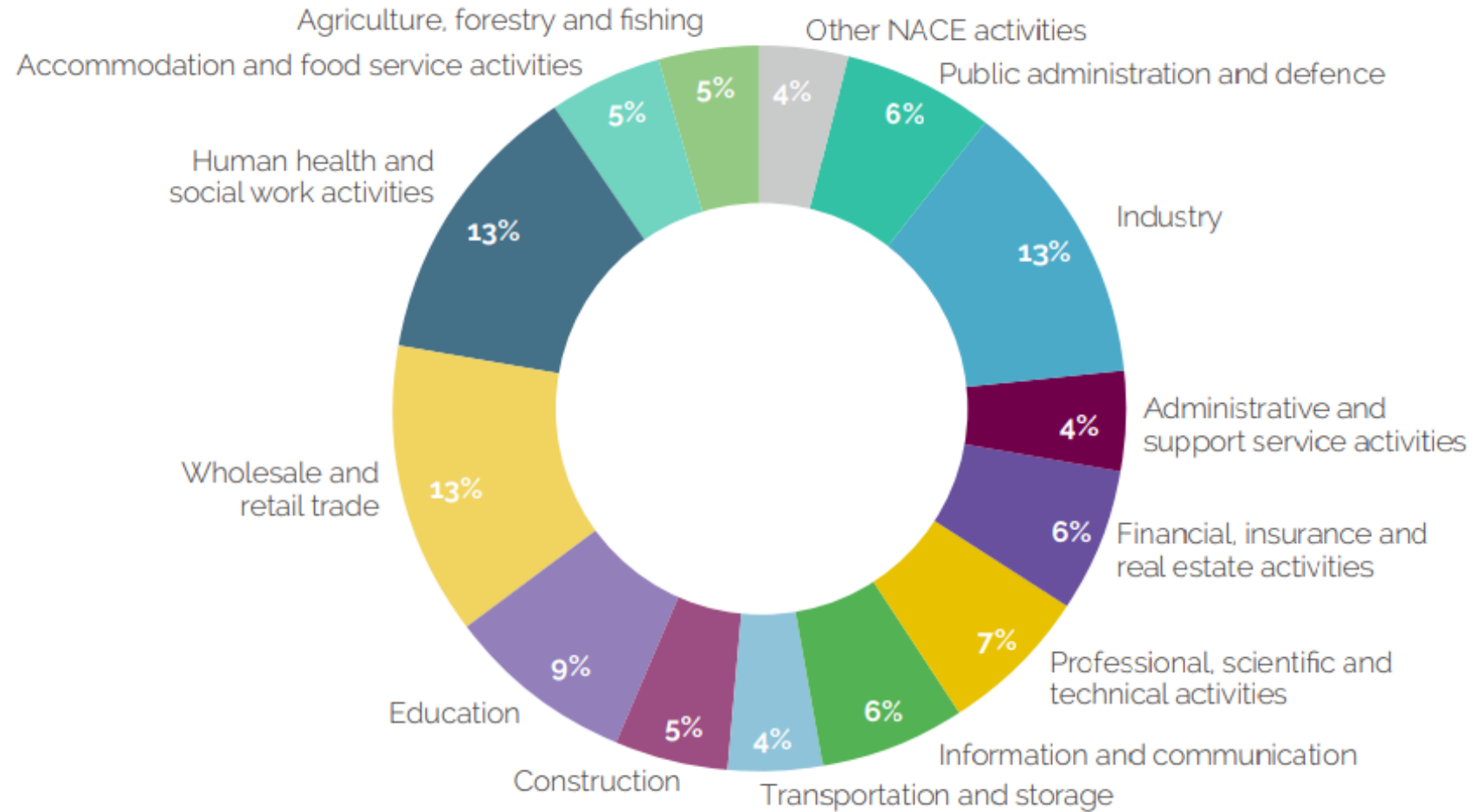


2016 2,003,645

Total Change
120,945

2022
2,124,590

Diverse Employment



Quarterly Bulletin QB4 – December 2023

What is the outlook for the economy?

Inflation easing



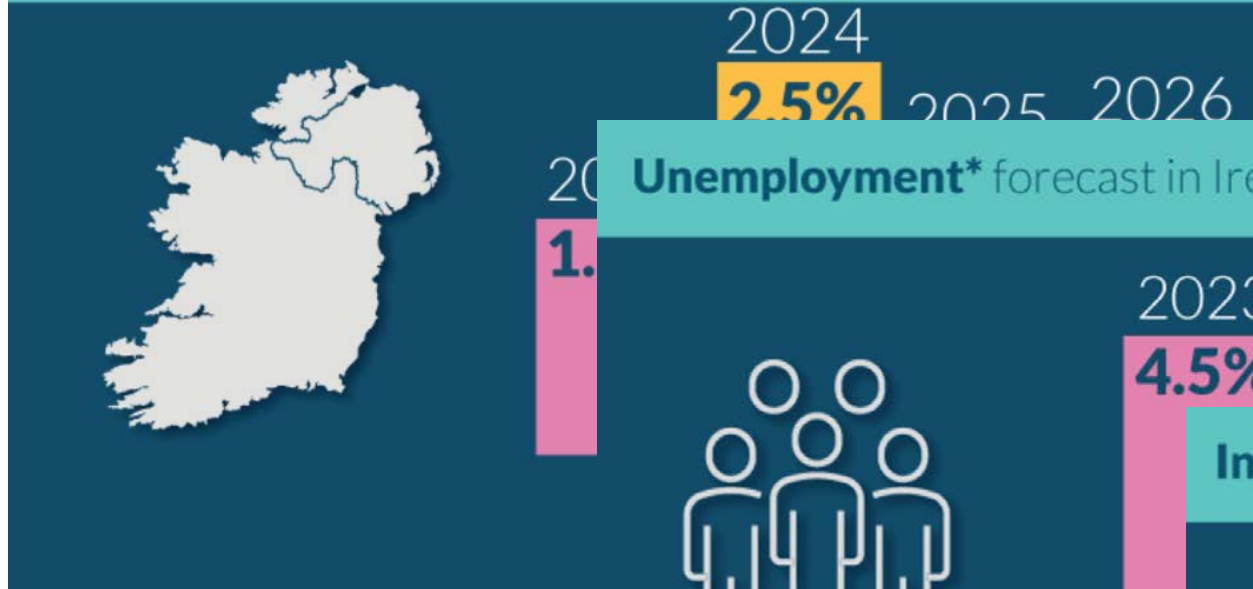
Labour market remaining tight



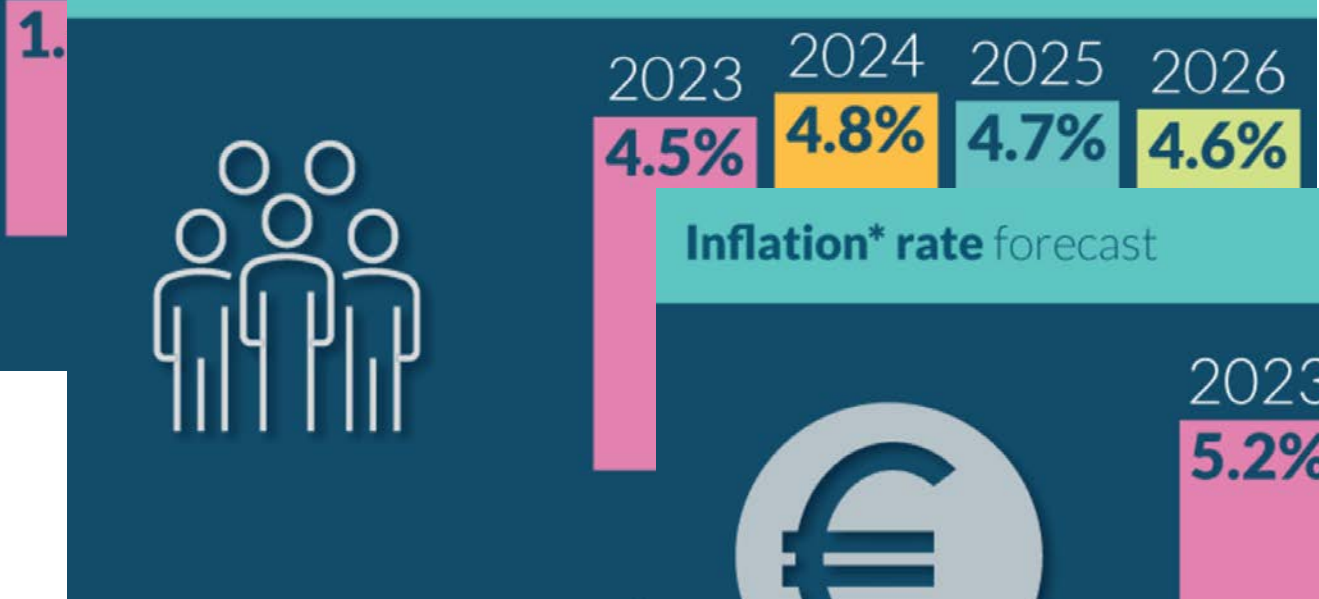
Slower economic growth



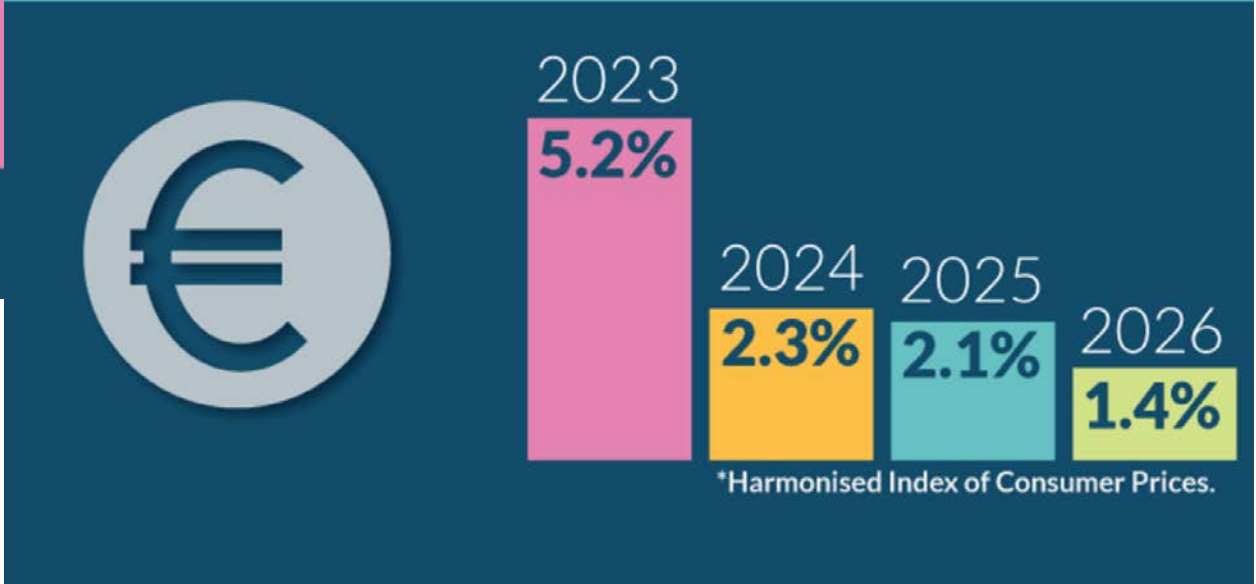
Forecast growth* in Irish economy



Unemployment* forecast in Ireland



Inflation* rate forecast



*Harmonised Index of Consumer Prices.

A person is seen from behind, standing with their arms raised in a gesture of triumph or joy. They are wearing a light-colored, long-sleeved shirt. The background is a vast, open sky at sunset or sunrise, with soft, golden light and scattered white clouds. The overall mood is one of hope and achievement.

PROSPERITY



DANGER

- More Consumption
- More Waste
- More Pressure on Resources
- More Dependence on Export
- More Infrastructure Required

- More Prevention
- More Reduction
- More Reuse
- More Recycling
- More Facilities

PRESSURE

Irish Waste Market Structure



Cooperation

Private

- Collection
- Processing
- Recovery
- Disposal
- Export

Public

- Planning
- Regulation
- Enforcement
- Education
- Facilities

Collaboration

Irish Waste Statistics



Waste Generation

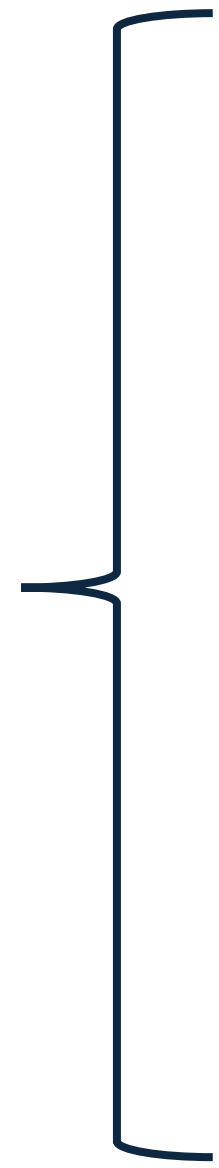
17.6 Mt

(12Mt Soil & Stone)



3.2 Mt

Municipal



1.8 Mt



0.7 Mt



0.7 Mt



What is in Ireland's General Waste Bin?



Where the waste is **ACTUALLY** going...

General Waste Bin



Where the waste **SHOULD** be going...



64% of waste in general waste bin should be put in recycling or organic waste bins or brought to bring centres.

*Contamination = leftover & residual food & liquids on paper, cardboard, composites, plastic and metal materials

What is in Ireland's Recycling Bin?



36% of waste in recycling bin should be put in general waste bins or organic waste bins or brought to bring centres.



*Contamination = leftover & residual food & liquids on paper, cardboard, composites, plastic and metal materials

What is in Ireland's Organic Waste Bin?



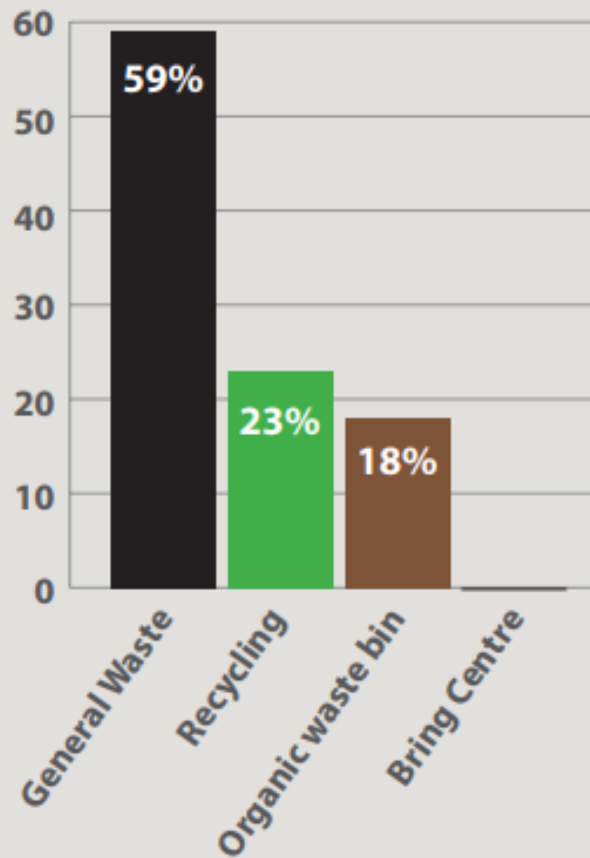
Organic Waste Bin

5% of waste in organic bins should be put in general waste or recycling bins or bring centres.



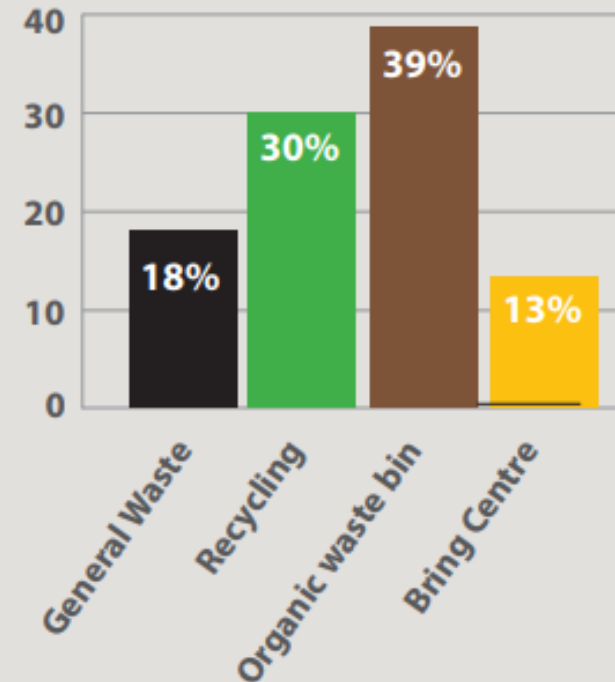
Where is it going?

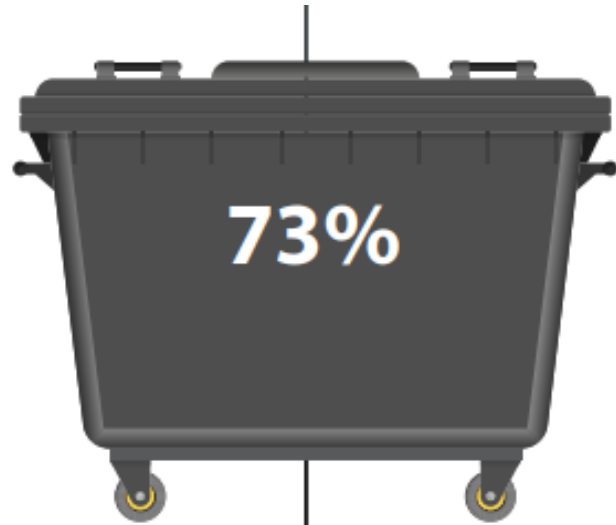
Actual (2022) segregation of household kerbside waste



Where should it go?

If household kerbside waste were segregated optimally





General Waste Bins
505,000 Tonnes



Recycling Bins
125,000 Tonnes



Organic Waste Bins
60,000 Tonnes

What is in the commercial general waste bin?



What is in the commercial recycling bin?



24% of items in recycling should be in General Waste or Organic Waste



What is in the commercial organic waste bin?



- 2% CARDBOARD
- 2% UNCLASSIFIED COMBUSTIBLES
- 2% COMPOSTABLES
- 1% PAPER
- < 1% EVERYTHING ELSE



ONLY 5% of items in Organic Waste should be in General Waste or Recycling.





Rialtas na hÉireann
Government of Ireland

Government Response

- Commercial Waste Regulations

(Segregated, Incentivised, Weighed)

- Household Food Waste and Bio Waste Regulations

(Brown Bins for all Households, Food & Garden Waste)

- Waste Recovery Levy and Landfill Levy

(€10/tonne Recovery, €85/tonne Landfill)

- Deposit Return Scheme

(15c/25c Plastic, Aluminium, Metal)

Waste Challenges

- Generation 
- Prevention 
- Export 
- Policy 
- Plan 



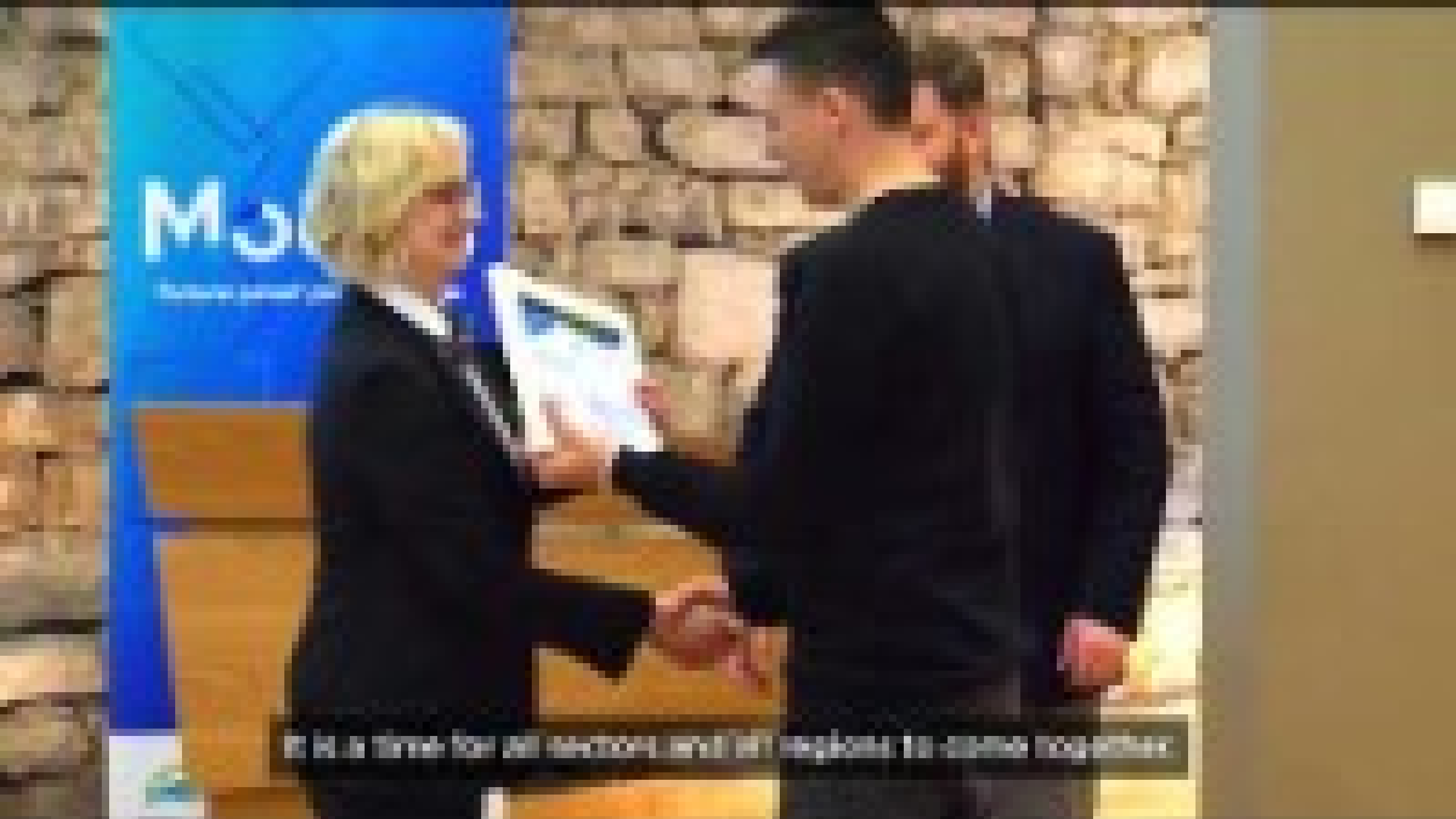
Rialtas Áitiúil Éireann
Local Government Ireland

Local Government Response

National waste Management Plan

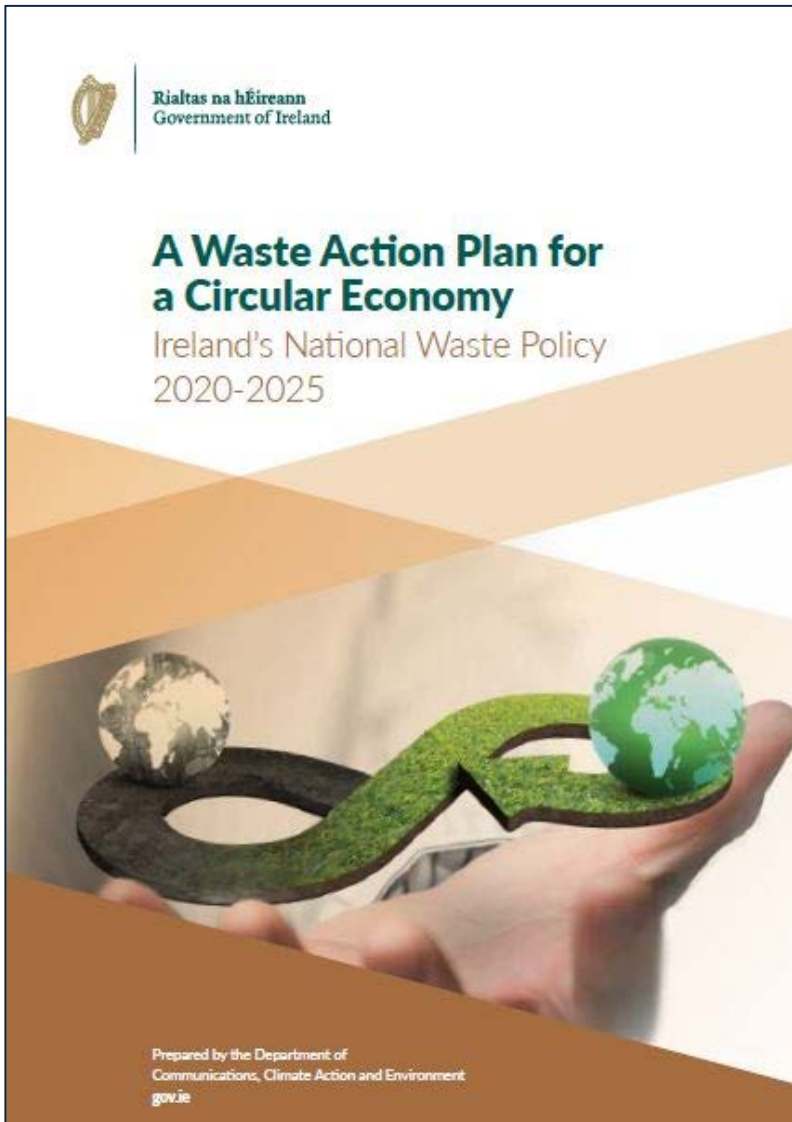
for a

Circular Economy



MO

Mr. [Name] (left) and Mr. [Name] (right) are seen at the [Event Name] on [Date].



Prepared by the Department of Communications, Climate Action and Environment gov.ie

HOUSEHOLD AND BUSINESS

- RECYCLING TARGETS FOR WASTE COLLECTORS**
- STANDARDISED BIN COLOURS ACROSS THE STATE: GREEN FOR RECYCLING, BLACK FOR RESIDUAL AND BROWN FOR ORGANIC WASTE**
- WASTE RECOVERY LEVY TO ENCOURAGE RECYCLING**
- WASTE OVERSIGHT BODY TO MANAGE CONSUMER RIGHTS**
- EDUCATION AND AWARENESS CAMPAIGN TO IMPROVE WASTE SEGREGATION**

FOOD WASTE

- HALVE OUR FOOD WASTE BY 2030**
- WASTE SEGREGATION INFRASTRUCTURE FOR APARTMENT DWELLERS**
- SUSTAINABLE FOOD WASTE MANAGEMENT OPTIONS FOR ALL HOMES AND BUSINESSES**

PLASTIC, PACKAGING AND SINGLE USE PLASTIC (SUP)

- DEPOSIT AND RETURN SCHEME FOR PLASTIC BOTTLES AND ALUMINIUM CANS**
- SINGLE USE ITEMS BANNED FROM JULY 2021:** COTTON BUD STICKS, CUTLERY, PLATES, STIRRERS, CHOPSTICKS, STRAWS, POLYSTYRENE CONTAINERS AND OXO-DEGRADABLE PLASTIC PRODUCTS
- SIGNIFICANTLY REDUCE SUPS BEING PLACED ON THE MARKET BY 2026**
- ALL PACKAGING REUSABLE OR RECYCLABLE BY 2030**

EXTENDED PRODUCER RESPONSIBILITY (EPR)

- MANDATORY EPR FOR ALL PACKAGING PRODUCERS BEFORE 2024 EU DEADLINE**
- NEW RULES FOR EPR SCHEMES TO INCENTIVISE GOOD PRACTICE IN WASTE RECYCLING AND DRIVE BETTER PRODUCT DESIGN**
- PRODUCERS LIABLE FOR MODULATION FEES**

CONSTRUCTION AND DEMOLITION WASTE

- REVISION OF THE 2006 BEST PRACTICE GUIDELINES FOR C&D WASTE**
- STREAMLINE BY-PRODUCT NOTIFICATION AND END-OF-WASTE DECISION MAKING PROCESSES**
- WORKING GROUP TO DEVELOP NATIONAL END-OF-WASTE APPLICATIONS FOR PRIORITY WASTE STREAMS**

ENFORCEMENT

- EXPANDED ROLE FOR LOCAL AUTHORITIES TO ADDRESS PRIORITY WASTE ENFORCEMENT CHALLENGES**
- UNAUTHORISED SITES ACTION PLAN AND ANTI-DUMPING TOOLKIT**
- FIXED PENALTY NOTICES FOR BREACHES OF WASTE LAW**

GOVERNMENT LEADERSHIP ON CIRCULAR ECONOMY

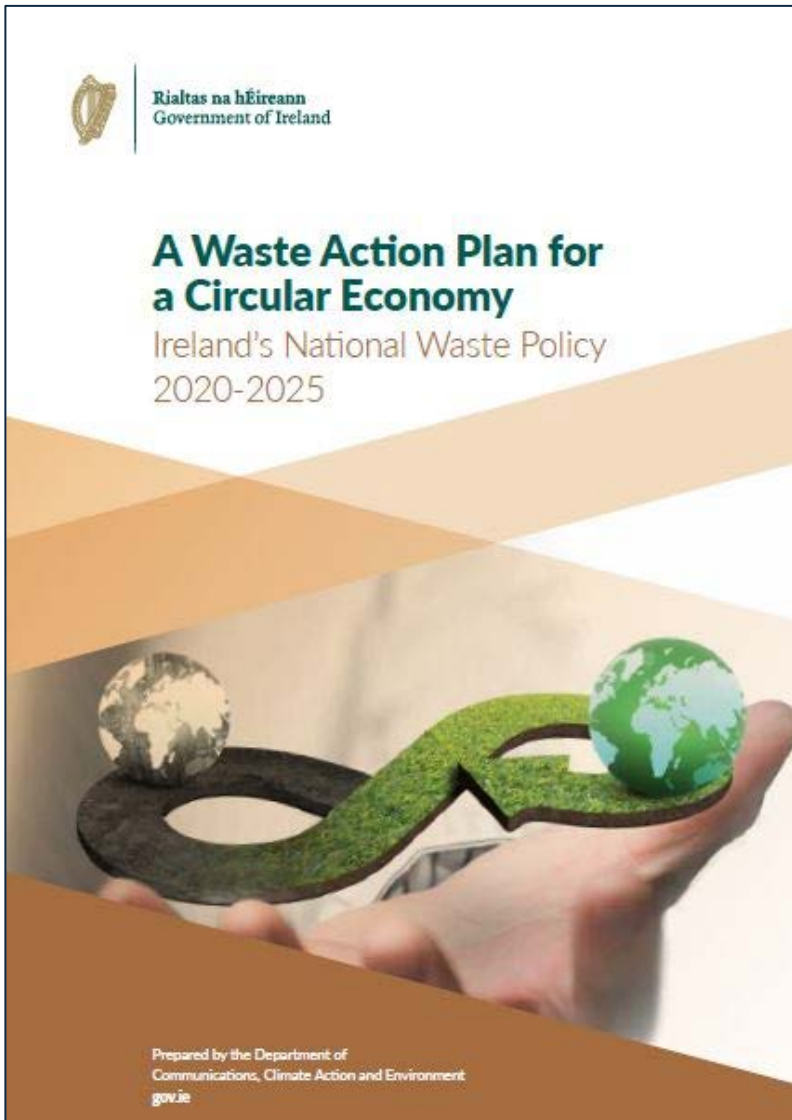
- HIGH LEVEL ALL OF GOVERNMENT CIRCULAR ECONOMY STRATEGY**
- DEVELOP CIRCULAR ECONOMY SECTORAL ROADMAPS**
- INCLUSION OF GREEN CRITERIA AND CIRCULAR ECONOMY PRINCIPLES IN ALL PUBLIC PROCUREMENT**
- EXPLORE HOW IRELAND'S DIGITAL SECTOR CAN ACCELERATE TRANSITION TO A CIRCULAR ECONOMY**

TEXTILES

- TEXTILE ACTION GROUP TO EXPLORE OPTIONS TO IMPROVE FUTURE CIRCULARITY IN TEXTILES**
- CONSIDER GLOBAL IMPACTS OF THE INTERNATIONAL TRADE IN USED TEXTILES**
- WORK WITH IRISH DESIGNERS AND RETAILERS TO PROMOTE ECO-DESIGN FOR CLOTHING AND TEXTILES**

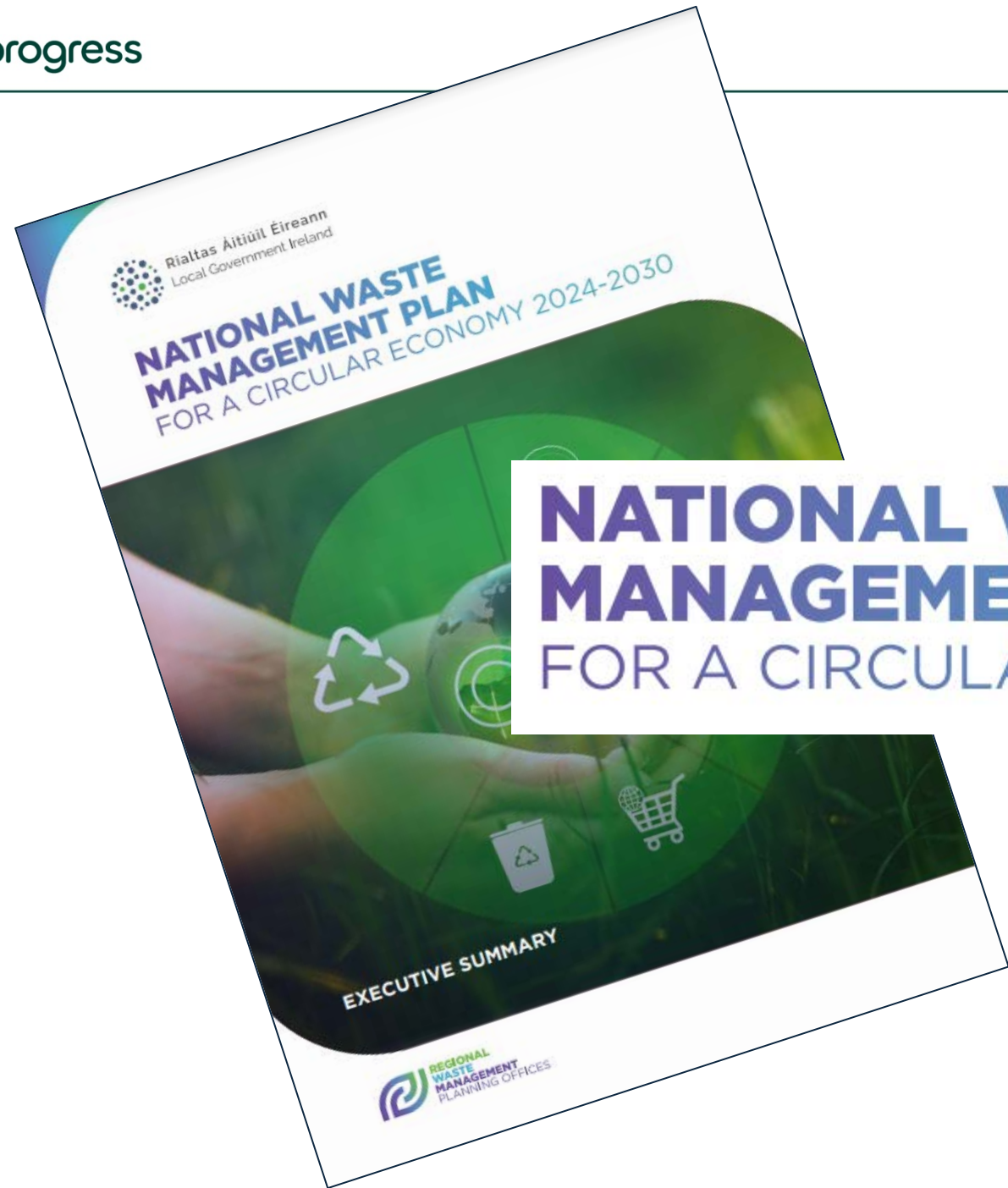
TREATMENT

- STANDARDISE WASTE STREAMS ACCEPTED AT CIVIC AMENITY SITES**
- REVIEW STATE SUPPORT FOR DEVELOPMENT OF RECYCLING INFRASTRUCTURE**
- EXAMINE LEGISLATION AND PROCEDURES FOR DEVELOPMENT OF WASTE MANAGEMENT INFRASTRUCTURE**



Called for targets for:

- Resource Consumption
- Contamination Reduction
- Reuse
- Repair



NATIONAL WASTE MANAGEMENT PLAN

FOR A CIRCULAR ECONOMY 2024-2030



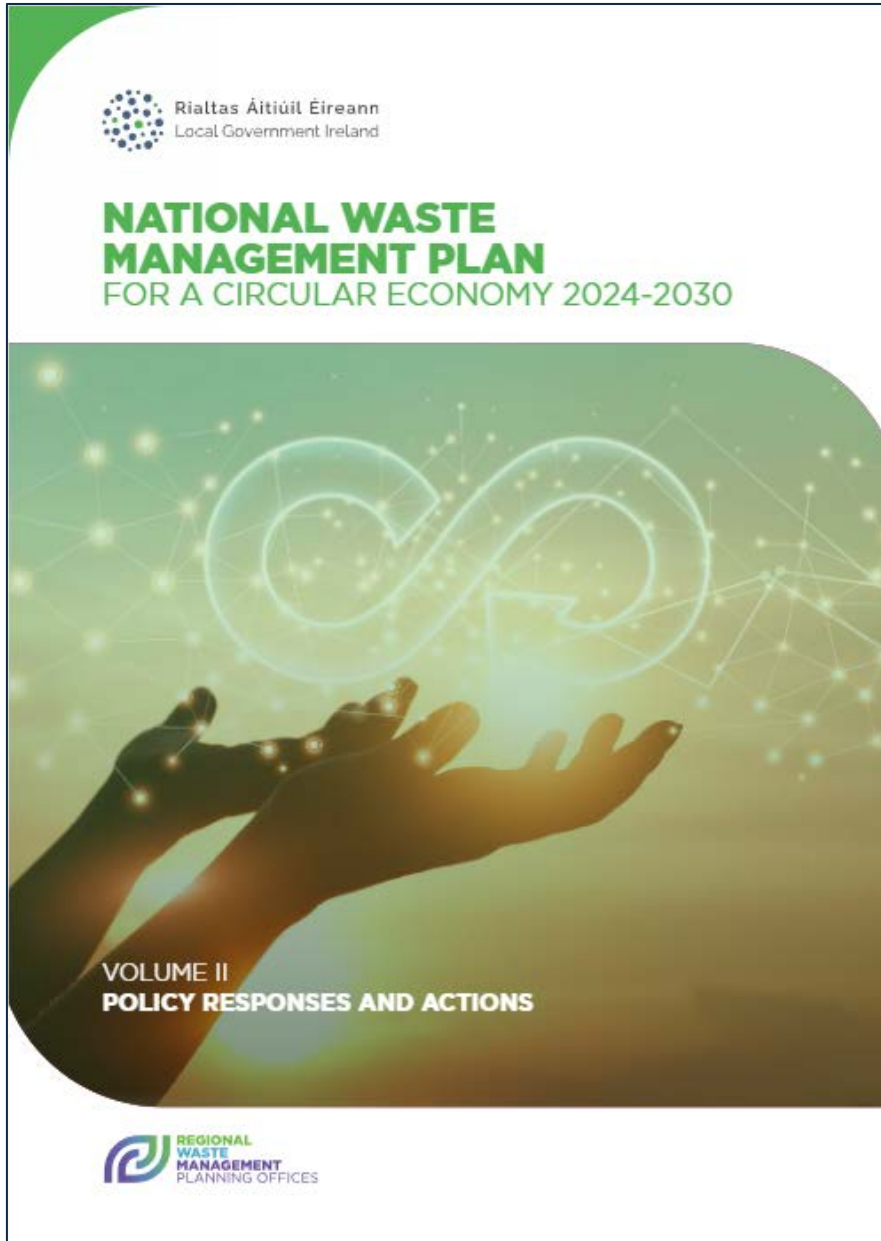
..challenges

..responses

..delivery

..supporting

..environment



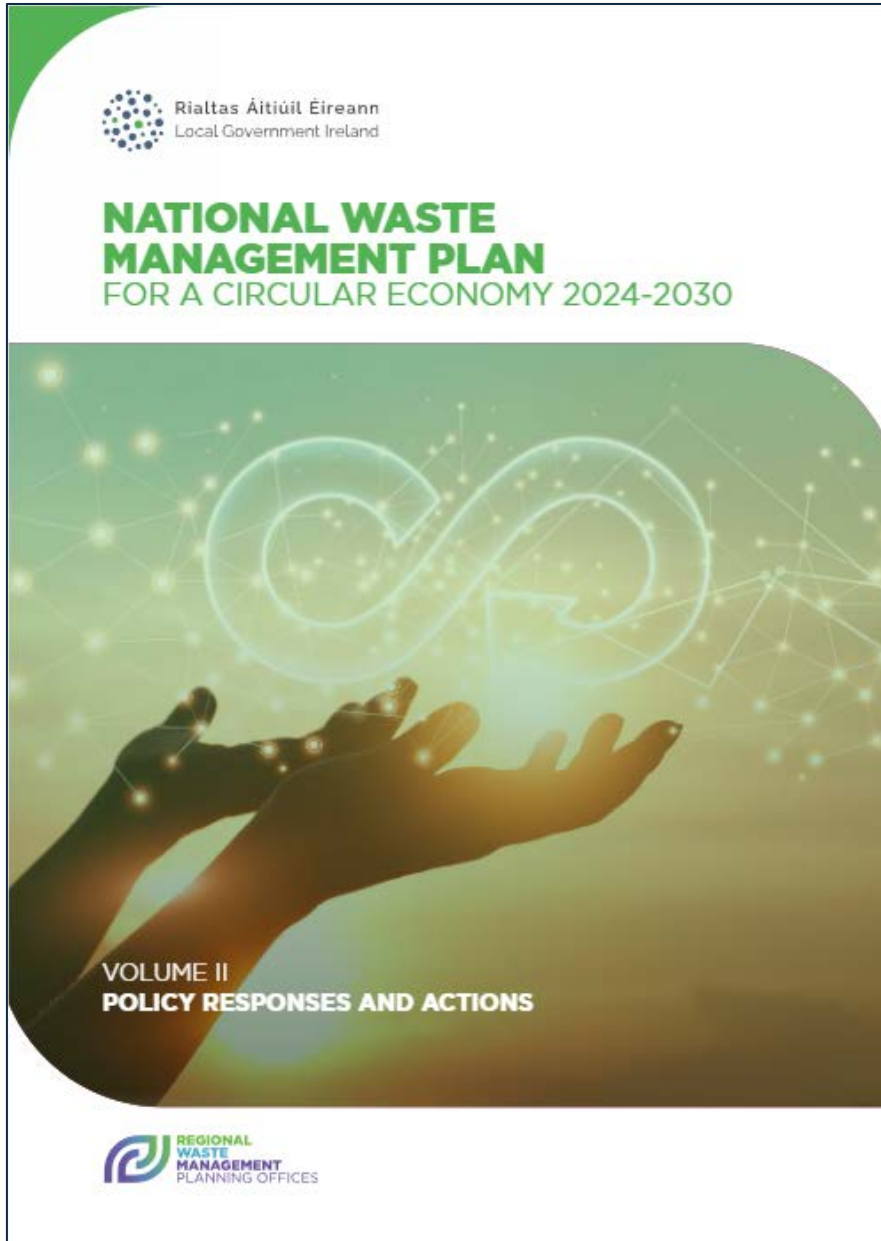
AMBITION

0%
**TOTAL WASTE
GROWTH**

0%
**TOTAL WASTE
GROWTH**

- Maintain waste management and behavioural advances
- Accelerate the transition to a Circular Economy
- Influence sustainable consumption
- Improve the capture of all wastes optimising circularity
- Enable compliance with policy and legislation

Current Baseline
2.7 tonnes
Total waste
Per person Per year



TARGETS



6%

**REDUCTION
IN rMSW
PER PERSON
BY 2030**

**Baseline 0.37 tonnes rMSW
per person (2021)**

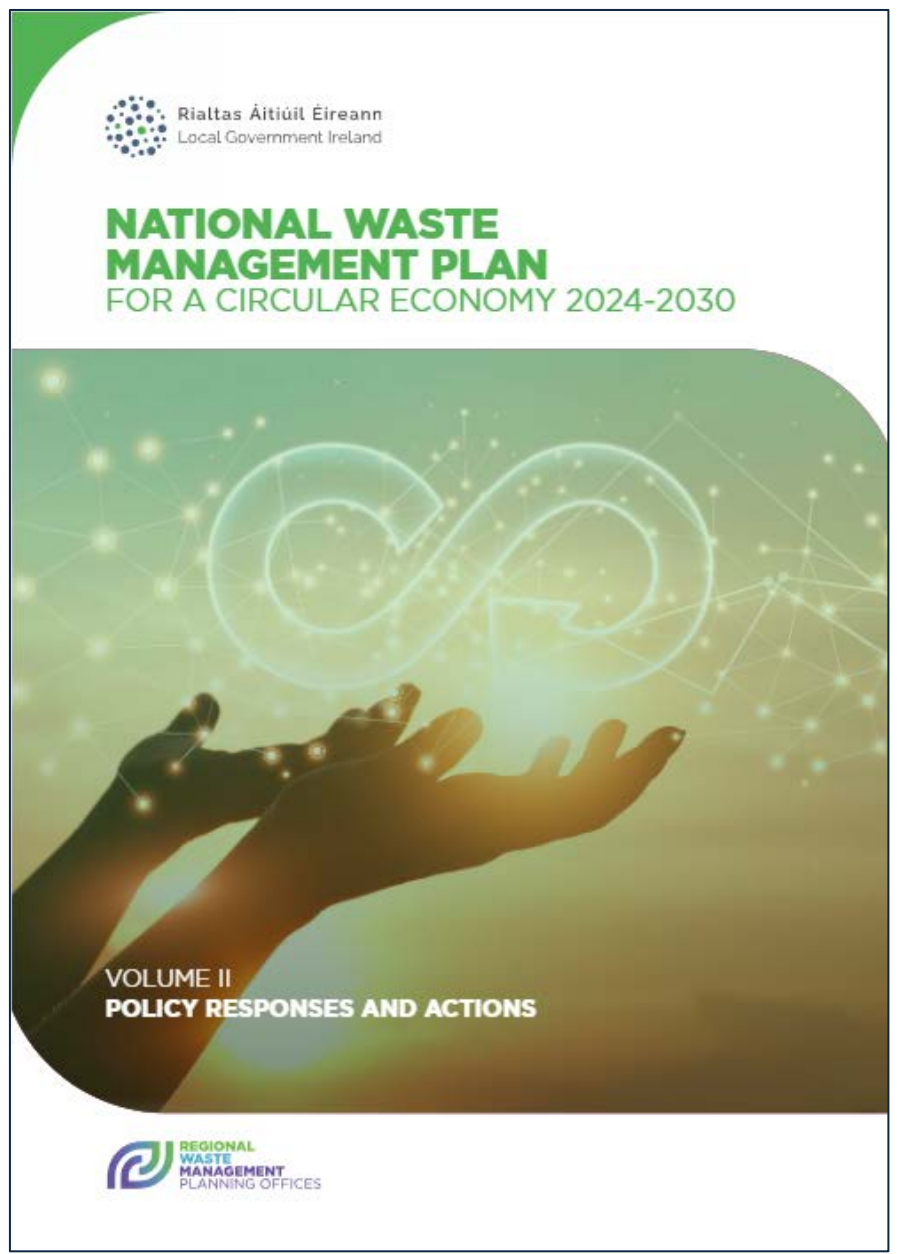


TARGETS

 **12%**

**REDUCTION
IN C&D WASTE
BY 2030**

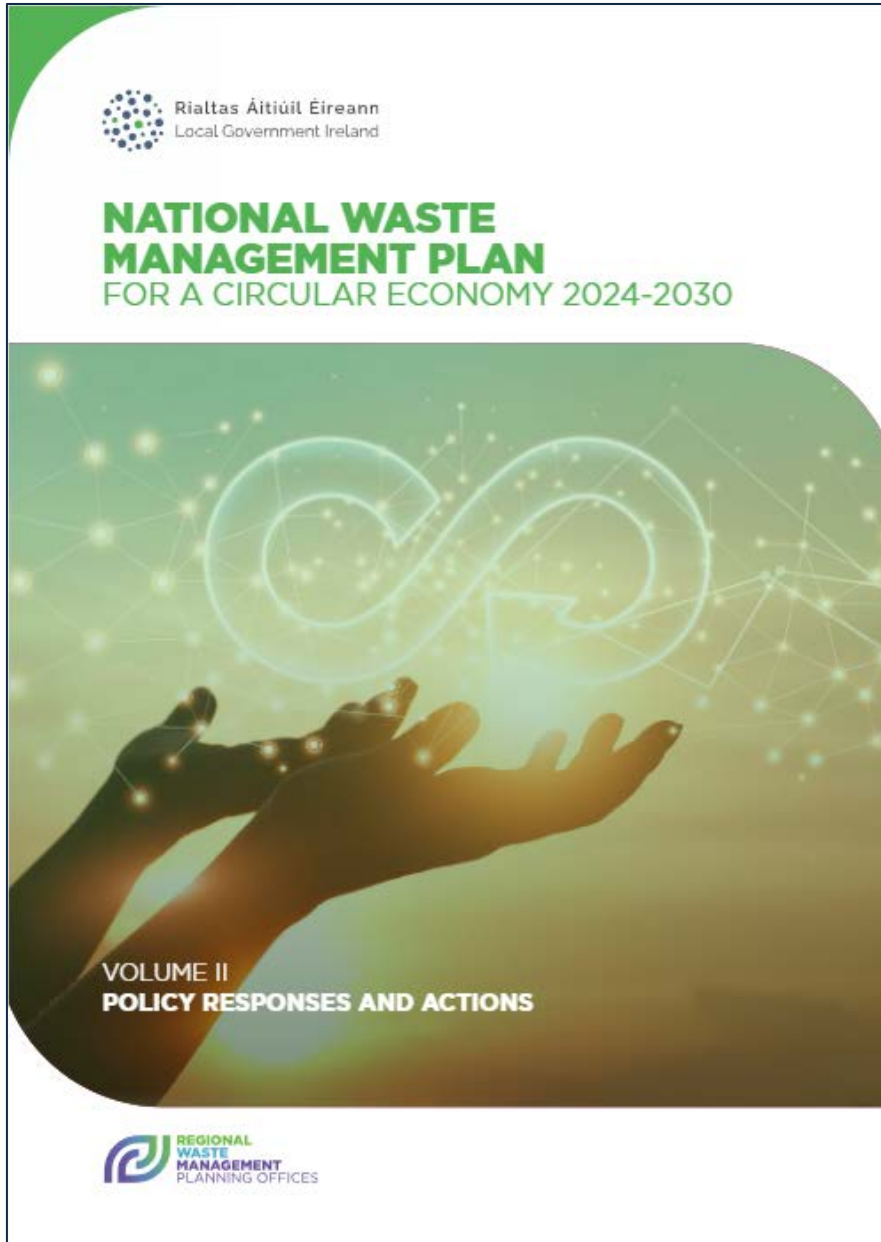
Baseline 9 M tonnes
(2021)



TARGETS

 **90%**
MATERIAL COMPLIANCE IN THE DRY RECYCLING BIN

Baseline To be determined
(2024)



TARGETS

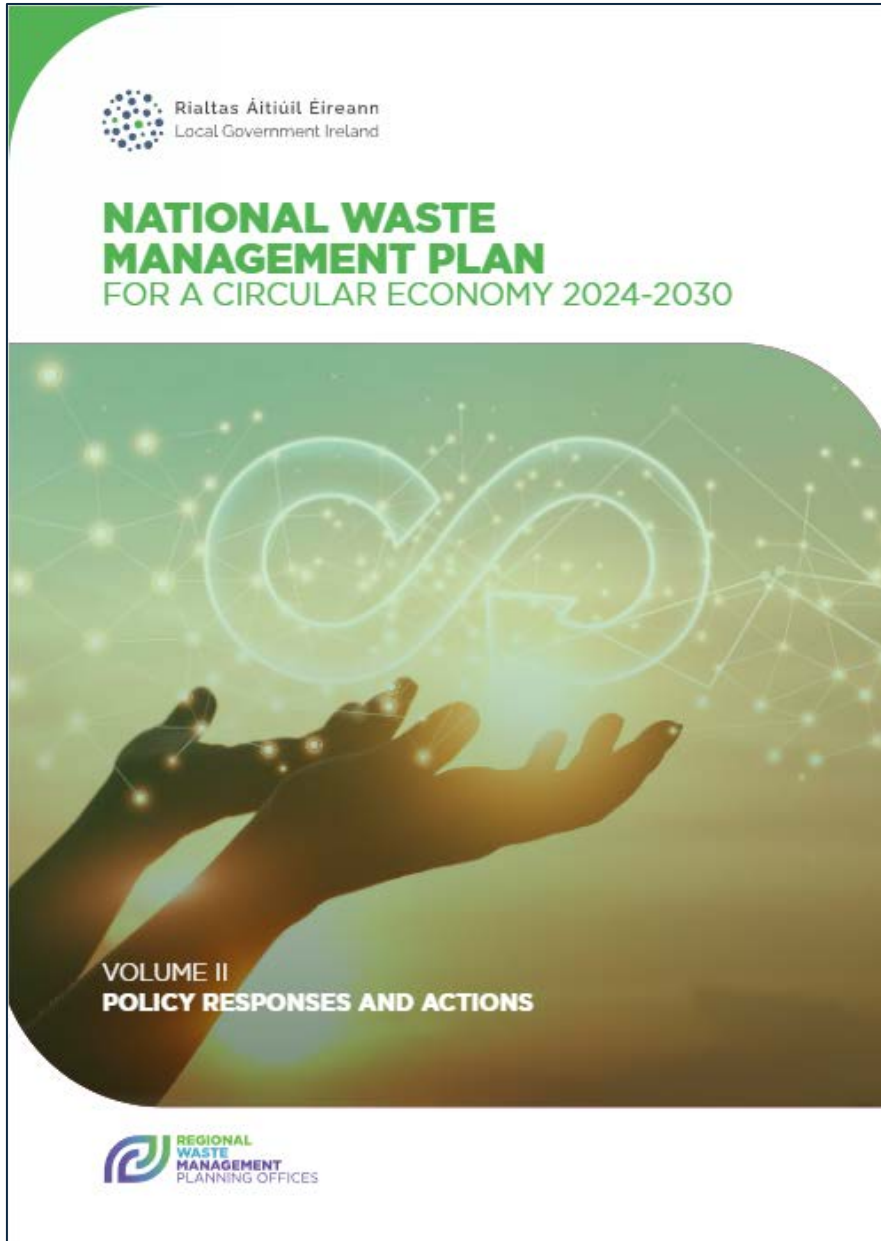
10%

**PER ANNUM INCREASE
IN MATERIAL
COMPLIANCE IN
THE RESIDUAL BIN.**

(90% BY END OF 2030)

**Household / Commercial
Baseline 36 / 26%**

(2022)




TARGETS

20kg
PER PERSON
PER YEAR

Baseline 10.6 kg per person
(2021)

**min
10**
REUSE
FACILITIES
AT CAS



Rialtas Áitiúil Éireann
Local Government Ireland

**NATIONAL WASTE
MANAGEMENT PLAN**
FOR A CIRCULAR ECONOMY 2024-2030

VOLUME II
POLICY RESPONSES AND ACTIONS

REGIONAL
WASTE
MANAGEMENT
PLANNING OFFICES



TARGETS



REPAIR TARGET ROADMAP



REPAIR TARGET ROADMAP

- Establish a collaborative working group with DECC and the EPA to encourage and facilitate the development of the repair sector to set the framework for target delivery.
- Identify and agree product categories, and establish a framework to enable quantification of tonnages for each category in order to establish a national baseline for preparation for reuse and repair activities.
- Establish a database of repair practitioners in Ireland that are engaged in the active repair of the relevant product categories.
- Compile the national scale repair baseline for the selected product categories for a given baseline year.
- Establish a suitably ambitious repair target – likely this target will be in a similar format to that for reuse to allow the comparison of both targets.
- Develop monitoring and tracking tools to facilitate the assessment of the impact of repair activities; and
- Undertake iterative target reviews to drive ambition and repair activities.

(It is proposed to consider a roadmap for the remanufacturing target in parallel with repair.)



FOCUS AREA GROUPS

16



4 **OPERATIONAL FOCUS AREAS**



6 **MATERIAL STREAM FOCUS AREAS**



6 **INFRASTRUCTURAL FOCUS AREAS**

Focus Area Fact Sheet

Targeted
Policies

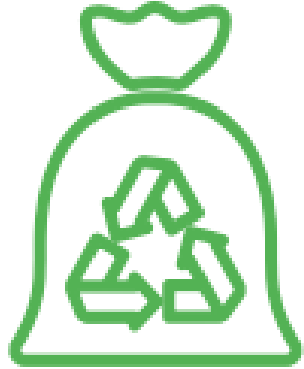
Priority
Actions

FOCUS AREA 1	MUNICIPAL COMMERCIAL WASTE
Purpose	What is it?
Promote prevention and better segregation of commercial waste.	Municipal commercial waste is mixed waste which is similar in nature and composition to waste from households and includes food waste.
Targeted Policies	Priority Actions (Responsibility)
TP1.1	PA1.1 (LGS)
Identify and promote new means, methods and key drivers of sustainable consumption practices to reduce waste generation.	Collaborate with other agencies to develop and deliver targeted awareness campaigns and projects to improve behaviours on prevention, reuse and repair in non household settings.
TP1.2	PA1.2 (LGS)
Ensure that all non-household municipal waste settings adopt best practice on waste segregation and are serviced with a segregated waste collection system to maximise the quantity and quality of materials collected.	Enhance the capture of data from waste collectors for non-household settings through the National Waste Collection Permit Office.
TP1.3	PA1.3 (LGS/Ind.)
Strengthen the monitoring and accurate measurement of commercial municipal waste flows.	Investigate the potential for a sustainable waste management assurance scheme for business consistent with the transition to a circular economy.
TP1.4	PA1.4 (LGS/Ind.)
Implement appropriate engagement and /or enforcement measures in response to non-compliances identified.	Engage with businesses through local authority structures to promote consistent practices with regard to the management of commercial waste using measures including the MyWaste.ie business tools.
TP1.5	PA1.5 (LGS)
Promote the consistent application of an appropriate incentivised charging system for non-household municipal waste, through awareness and enforcement.	Ensure the consistent and targeted application of waste storage and presentation bye-laws to improve participation and segregation practices and incorporate into the RMCEI process.

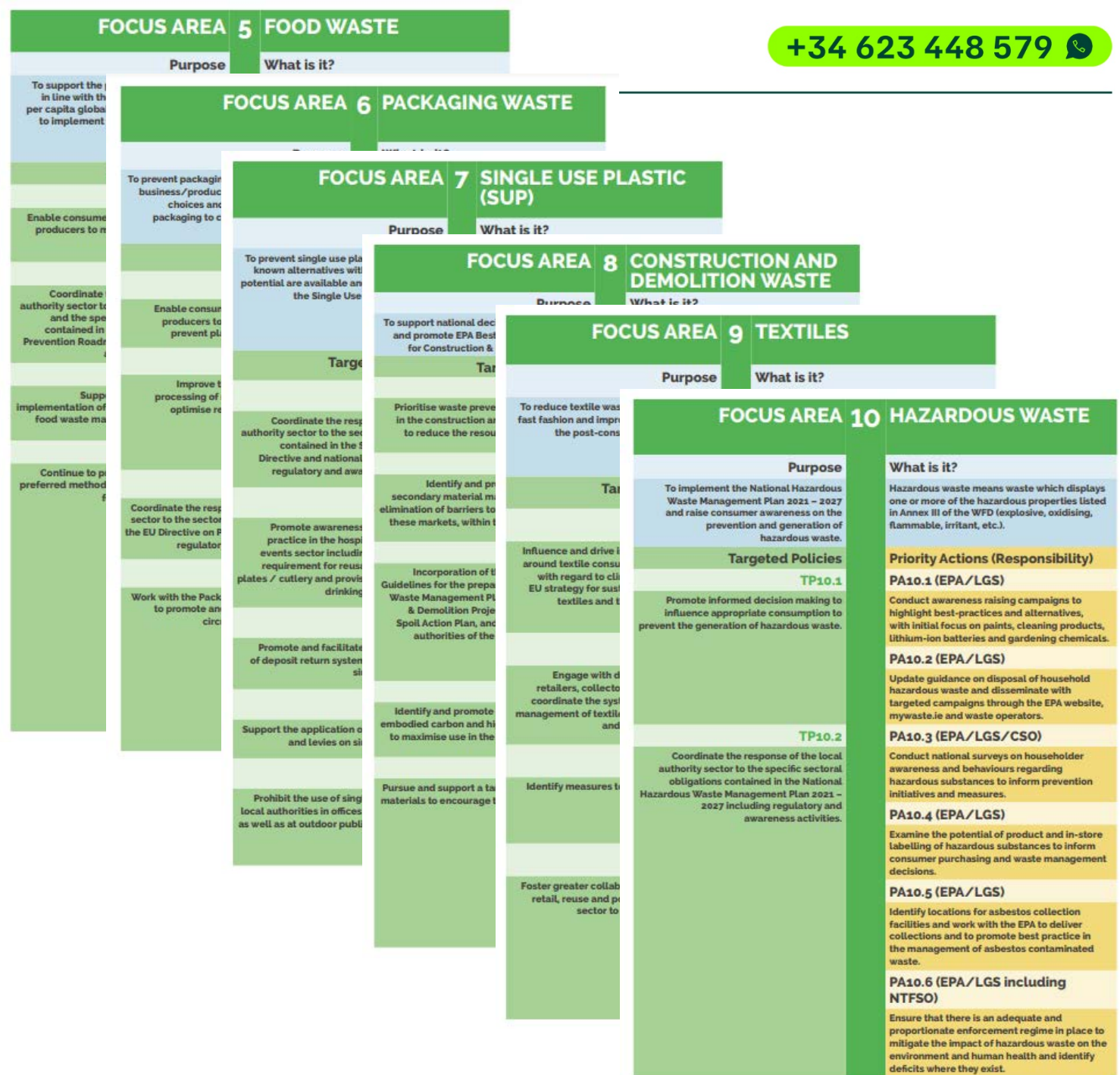


OPERATIONAL FOCUS AREAS

FOCUS AREA 1 MUNICIPAL COMMERCIAL WASTE		FOCUS AREA 2 MUNICIPAL HOUSEHOLD WASTE		FOCUS AREA 3 COMPLIANCE SCHEMES (EPR's)		FOCUS AREA 4 COLLECTION SYSTEMS	
Purpose	What is it?	Purpose	What is it?	Purpose	What is it?	Purpose	What is it?
Promote prevention and better segregation of commercial waste		To reduce household consumption and provide universal access to, and participation in, authorised collection and improve source segregation to the inherent value of waste	Municipal household waste is mixed waste and	To improve the circularity of waste streams collected by facilitating the potential for reuse and repair and compliance	Compliance Schemes or Extended Producer Responsibility schemes, EPR's, ensure	To maintain and improve existing waste collection systems and provide viable alternatives for waste streams not serviced.	Collection systems provide for the capture of waste materials and include the preliminary sorting and storage of materials to facilitate transport to treatment facilities.
Targeted		Targeted		Targeted		Targeted Policies	Priority Actions (Responsibility)
Identify and promote new means and key drivers of sustainable collection practices to reduce waste generation		Identify and promote new means and key drivers of sustainable collection practices to reduce waste generation		Identify and promote new means and key drivers of sustainable collection practices to reduce waste generation		TP4.1 Maintain the primacy of kerbside source segregated collection of commercial/household waste as the optimum method to ensure the quantity and quality of materials collected.	PA4.1 (LGS/Ind.) Identify areas of low participation/coverage with WERLA and NW/CPO and engage with service providers to enhance coverage.
Ensure that all non-household waste settings adopt best practice waste segregation and are served by a segregated waste collection that maximises the quantity and quality of waste collected		Ensure that all household settings of an authorised waste service segregated kerbside but also Civic Amenity Sites or other alternative collection points		Promote and enhance the capture and circularity of mandated waste streams working with Compliance Schemes		TP4.2 Ensure that alternative collection systems are consistent with established kerbside collection systems.	PA4.2 (LGS/Ind.) Develop a strategy for the provision of fully segregated collection infrastructure at apartments and mixed use developments and produce guidance for the inclusion of infrastructure at all new developments.
Strengthen the monitoring and measurement of commercial waste		Strengthen the monitoring and measurement of household waste and appropriate enforcement measures in response to non-compliances		Promote the eco-design of products that are resource-efficient, durable, reusable and upgradable in order to maximise material reuse and prevent waste		TP4.3 Identify potential enhancements to existing collection and segregation systems and options for additional waste streams including material from street cleaning and litter management.	PA4.3 (LGS/Ind.) Collaborate with service providers to develop templates for standardised bulky goods and textile collection schemes, a dedicated collection service for repairables and examine the potential for the collection of household and small-scale hazardous waste.
Implement appropriate engagement and enforcement measures in response to non-compliances		Identify and implement enhanced and segregation systems for waste streams for all household settings to maximise the quantity and quality of waste collected		Identify and prioritise the establishment of additional Compliance Schemes and arrangements for priority waste streams		TP4.4 Develop an integrated, consolidated and coordinated public waste collection infrastructure network that responds sustainably to consumer needs, regulatory and policy challenges and the circular economy with the support of central government.	PA4.4 (LGS/DECC/EPR) Support and implement the recommendations of the National Review of Civic Amenity Sites in conjunction with DECC, Compliance Schemes and other key stakeholders.
Promote the consistent application of appropriate incentivised charging for non-household municipal waste and awareness and engagement		Analyse the impact of the existing incentivised charging system for household waste		Promote the Commission's initiative 'right to repair' to provide information on product reparability, availability of spare parts and repair manuals updates.		TP4.5 Evaluate existing offshore islands waste collection systems and identify appropriate enhancements consistent with international best practice and the waste hierarchy.	PA4.5 (DECC/LGS) Promote the provision of publicly accessible waste infrastructure including civic amenities, bring banks and pay to use facilities in particular in response to PA4.1, and ensure that such infrastructure is properly regulated.
							PA4.6 (LGS) WERLAs will work to ensure: the application of targeted equitable and proportionate enforcement on all waste collection activities, the implementation of the Waste Presentation Bye-Laws with a particular focus on the provisions of PA4.1 and continued and consistent data validation.

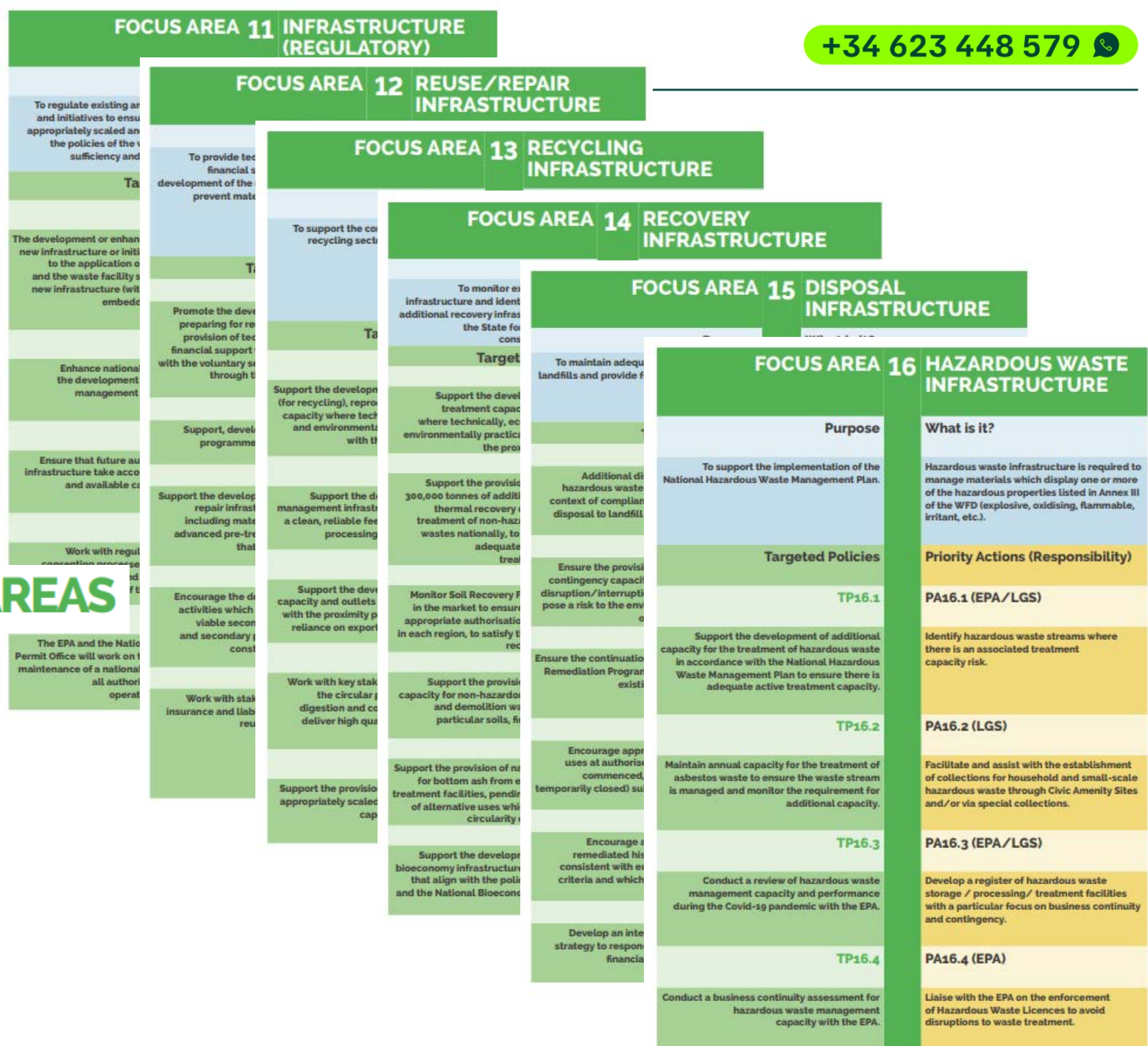


MATERIAL STREAM FOCUS AREAS





INFRASTRUCTURAL FOCUS AREAS



TOP DOWN

Built on Engagement

BOTTOM UP



DRAFT NATIONAL WASTE MANAGEMENT PLAN FOR A CIRCULAR ECONOMY



VOLUME III
DELIVERY ROADMAP



51 Key Deliverables

KEY DELIVERABLE 12

Reuse Infrastructure

The LGS is committed to facilitating reuse at 10% of existing CAS and at all Top Tier Sites identified by the CA Site review process subject to support from government.

KEY DELIVERABLE 25

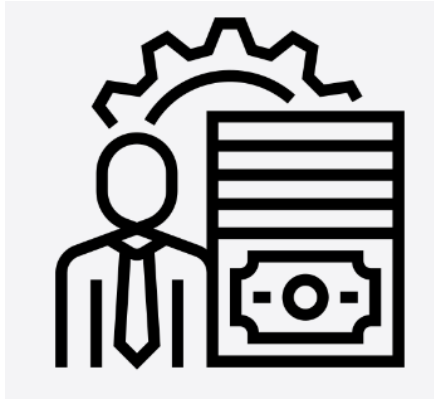
National Coordinating Group for Waste and the Circular Economy

DECC, LGS and EPA will collectively establish the NCGWCE to agree and align work plans, priorities, and supports to maintain the continuity of activities and accelerate the transition to a circular economy.

KEY DELIVERABLE 41

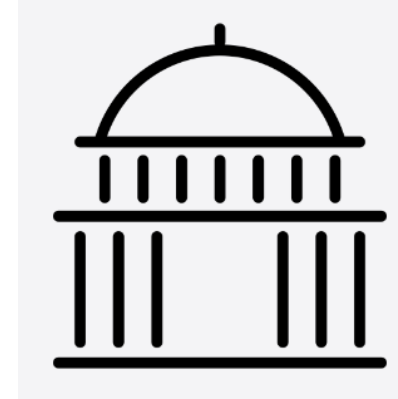
Strategic Multi Annual Work Planning

The LGS, DECC and EPA will produce a strategic multi-annual work plan through the recommended NCGWCE to ensure alignment of objectives, priorities and supports.



Private

- Collection
- Processing
- Recovery
- Disposal
- Export



Public

- Planning
- Regulation
- Enforcement
- Education
- Facilities

THIS PLAN IN NUMBERS:

1

Plan
Ambition

8

National
Targets

13

Core
Policies

16

Focus
Areas

74

Targeted
Policies

85

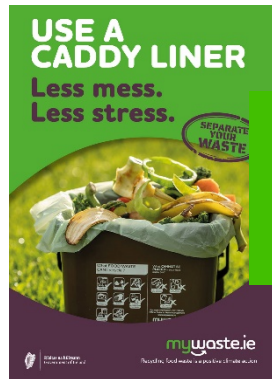
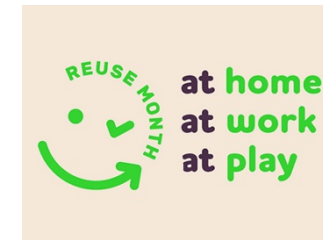
Priority
Actions

51

Key
Deliverables



Ireland's guide to waste mywaste





16·17·18

April

2024

6th Edition

National Waste Management Plan for a Circular Economy

Ireland

KEVIN SWIFT

REGIONAL WASTE COORDINATOR

CONNACHT ULSTER WASTE REGION